

# MONTHLY MEMBERSHIP PROGRESS REPORT

LOCATION WISCONSIN

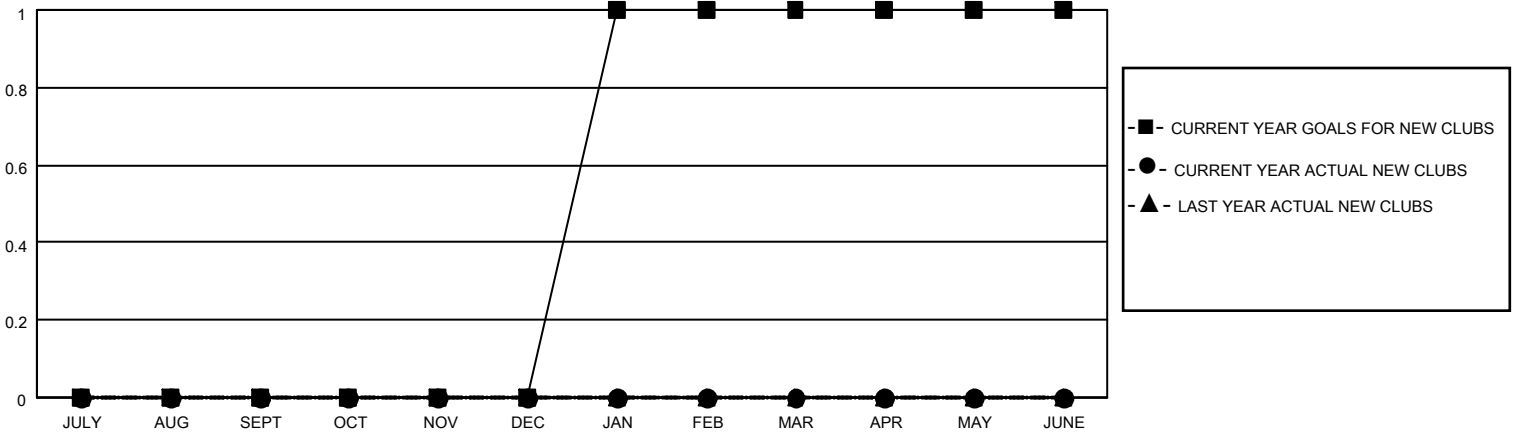
District 27 D2

Results as of: 7/31/2021

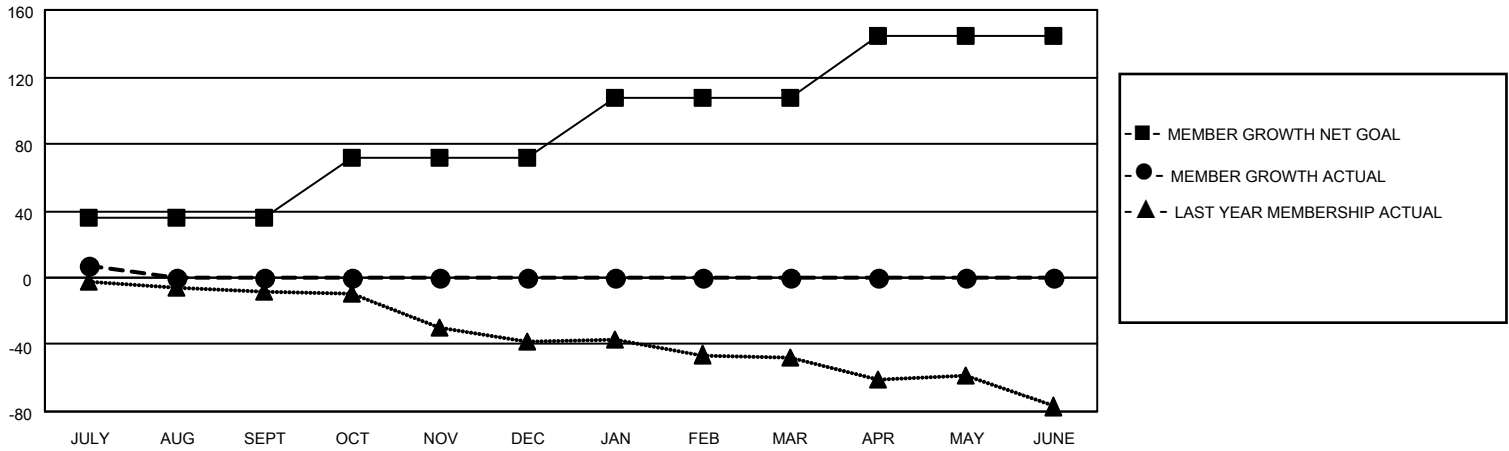
| Clubs                 |               |           |               |
|-----------------------|---------------|-----------|---------------|
| RESULTS FOR 2021-2022 |               |           |               |
| QUARTER               | NEW CLUB GOAL | NEW CLUBS | DROPPED CLUBS |
| JULY/AUG/SEPT         | 0             | 0         | 0             |
| OCT/NOV/DEC           | 0             | 0         | 0             |
| JAN/FEB/MAR           | 1             | 0         | 0             |
| APR/MAY/JUNE          | 0             | 0         | 0             |

| Members               |                        |                      |   |
|-----------------------|------------------------|----------------------|---|
| RESULTS FOR 2021-2022 |                        |                      |   |
| QUARTER               | MEMBER GROWTH NET GOAL | MEMBER GROWTH ACTUAL | DROPPED MEMBERS ACTUAL<br>(including transfers) |
| JULY/AUG/SEPT         | 36                     | 21                   | 12  |
| OCT/NOV/DEC           | 36                     | 0                    | 0   |
| JAN/FEB/MAR           | 36                     | 0                    | 0   |
| APR/MAY/JUNE          | 36                     | 0                    | 0   |

**GOALS AND ACTUAL NEW CLUBS CUMULATIVE**



**GOALS AND ACTUAL MEMBERS CUMULATIVE**



**DROPPED CLUBS: 0**

**6 CLUBS OF 48 ADDED 1 OR MORE NEW MEMBERS**

**GENDER DISTRIBUTION**

MALE            1,095 (72.61%)  
 FEMALE        413 (27.39%)

**DROPPED MEMBERS**

[CLICK HERE FOR CUMULATIVE MEMBERSHIP DATA](#)

|                |           |
|----------------|-----------|
| DECEASED       | 2         |
| CLUB CANCELLED | 0         |
| OTHER          | 10        |
| <b>TOTAL</b>   | <b>12</b> |

|                                 |     |
|---------------------------------|-----|
| TOTAL FAMILY UNIT MEMBERS       | 331 |
| FAMILY MEMBERS PAYING HALF DUES | 170 |